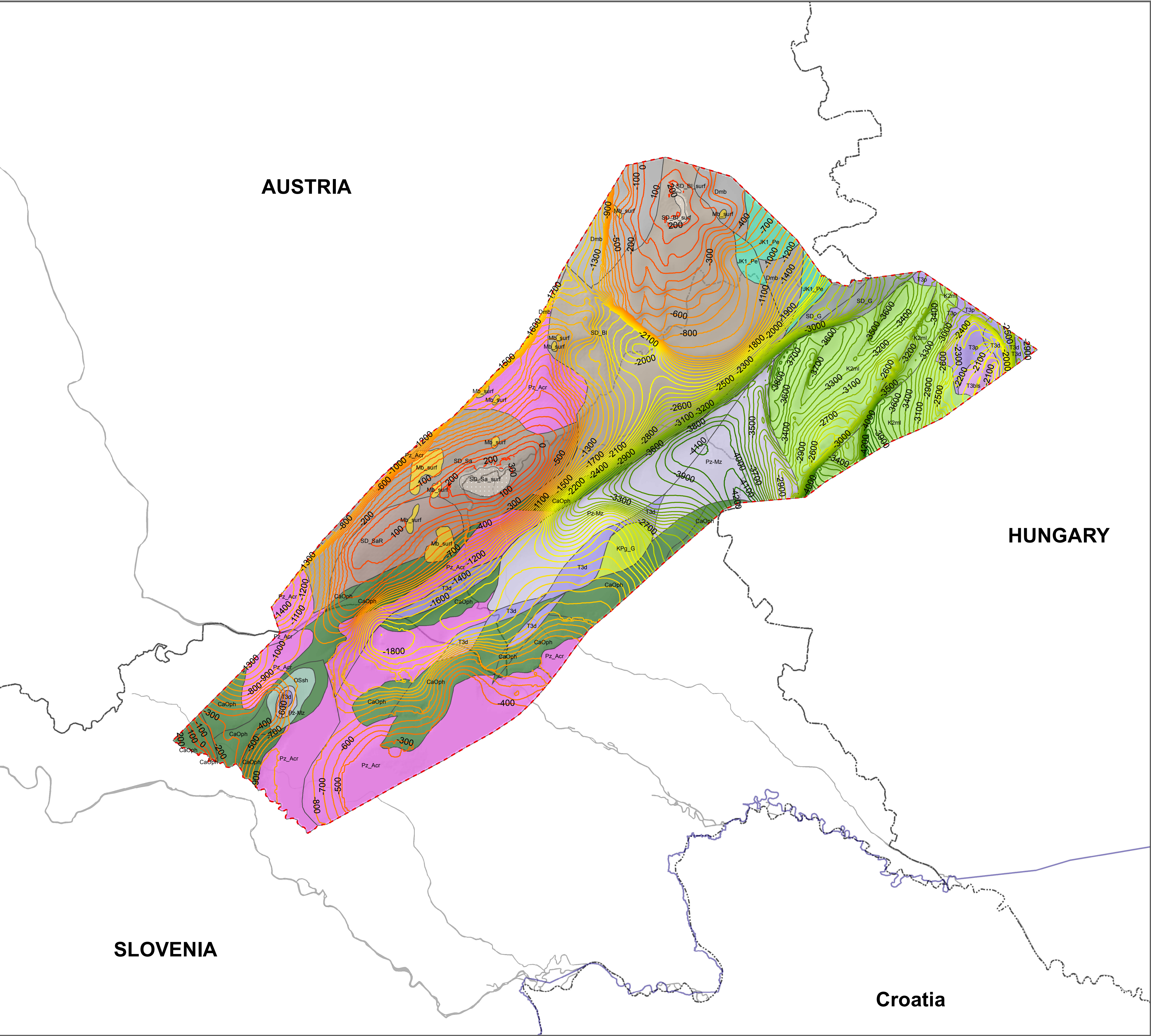
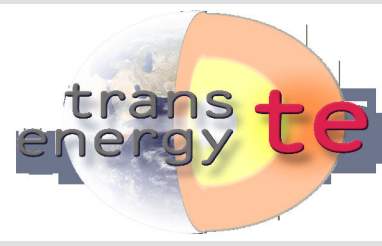


Pre-Tertiary model horizon geology for the Pilot –Project Area

Editor: Gyula maros, Vera Maigut
Authors of the model horizons:

Hungary: Rita Barczikayné Szeiler, LászlóFodor, László Gyalog, Zsolt Kercksmár, Árpád Magyar, Vera Maigut, Gyula Maros, László Orosz, Klára Palotás, Ildikó Selmeczi, András Uhrin;
Austria: Bernhard Atzenhofer, Rudolf Berka, Magdalena Bottig, Anna Brüstle, Christine Hörfarther, Gerhard Schubert, Julia Weilbold;
Slovenia: Mirka Trajanova.
2012



Legend

- CaOph - Clorite-amphibole and biotite chlorite schists and phyllite
- Dmb - Marble, calcareous slate (Graz Paleozoikum and Equivalents)
- JK1_Pe - Low-grade metamorphic formations (phyllite, calc-phyllite, quarz phyllite, quartzite, metasandstone, metaconglomerate, greenschist, basic metatuff, metatuffite) (Penninic unit)
- K2ml - Pelagic limestone and marl
- KPg_G - Marlstone, turbitite, sandstone, limestone, coal
- Mb_surf - Miocene Badenian sediments in general
- OSsh - Slates with lenses of diabase and interlayering of marmorized limestone
- Pz-Mz - Upper Paleozoic and Mesozoic formations in general
- Pz_Acr - Austroalpine units – gneiss, schist, phyllite, marble, amphibolite
- SD_BI - Blumau unit – Phyllite and carbonate rocks
- SD_BI_surf - Phyllite and carbonate rocks
- SD_G - Graz paleozoic in general
- SD_Sa - Sausal unit in general
- SD_SaR - Sausal unit – Radochen beds
- SD_Sa_surf - Sausal unit in general
- T3bls - Basinal limestone, dolomite, cherty limestone, cherty dolomite, marl, clay marl, calcareous marlstone
- T3d - Platform (shallow-marine) (thick-bedded, partly alga-laminated dolomite, biogenic limestone
- T3p - Platform carbonate (dolomite, limestone) together
- Pilot area border
- Supra area border
- State border

0 5 10 15 20 km

